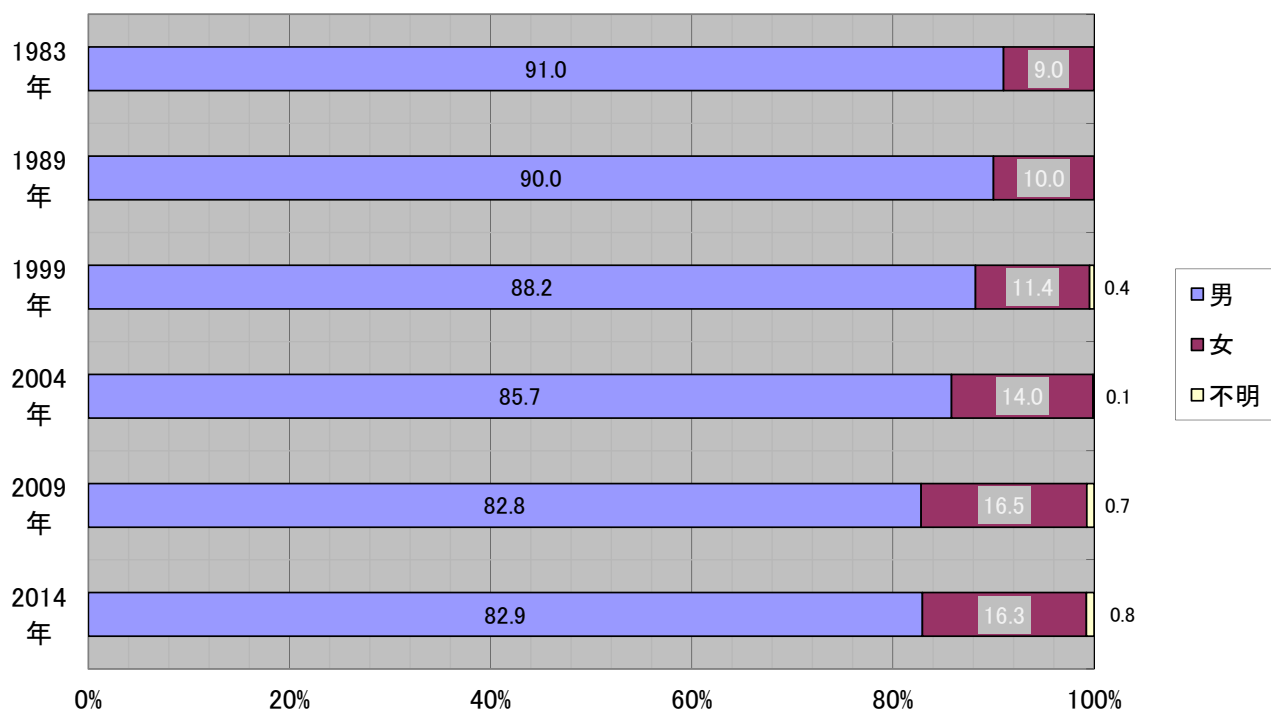
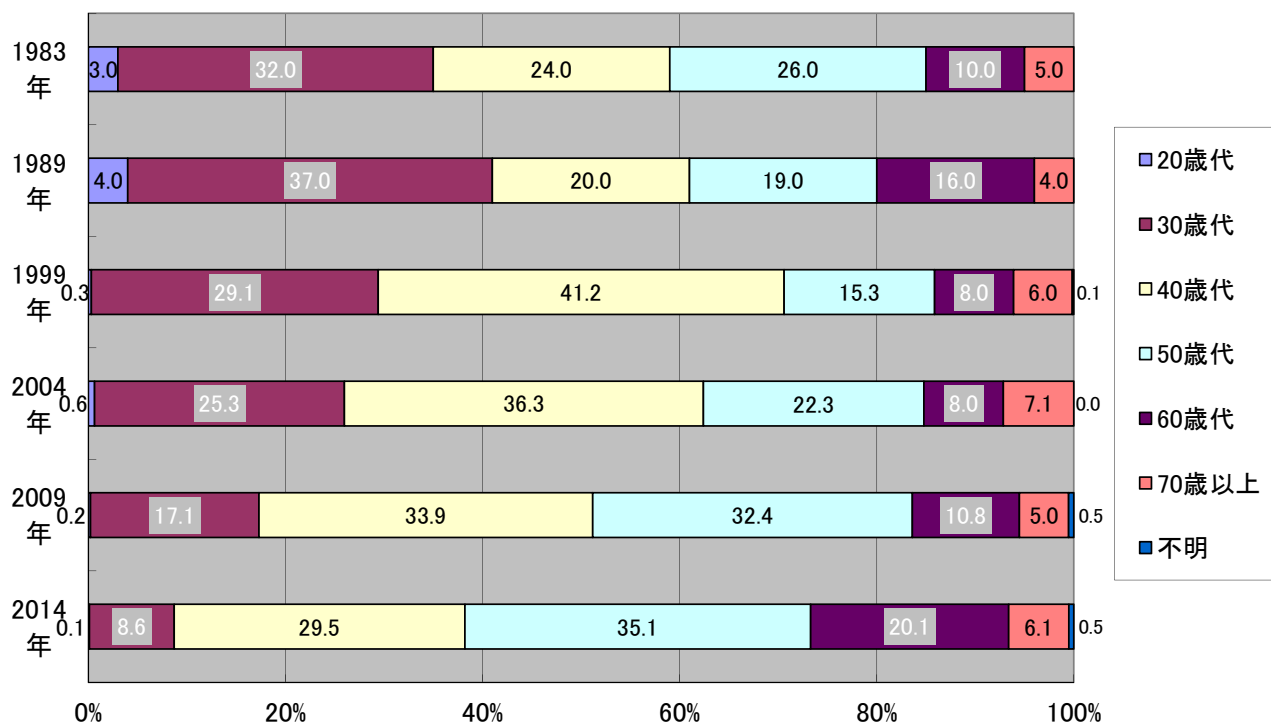


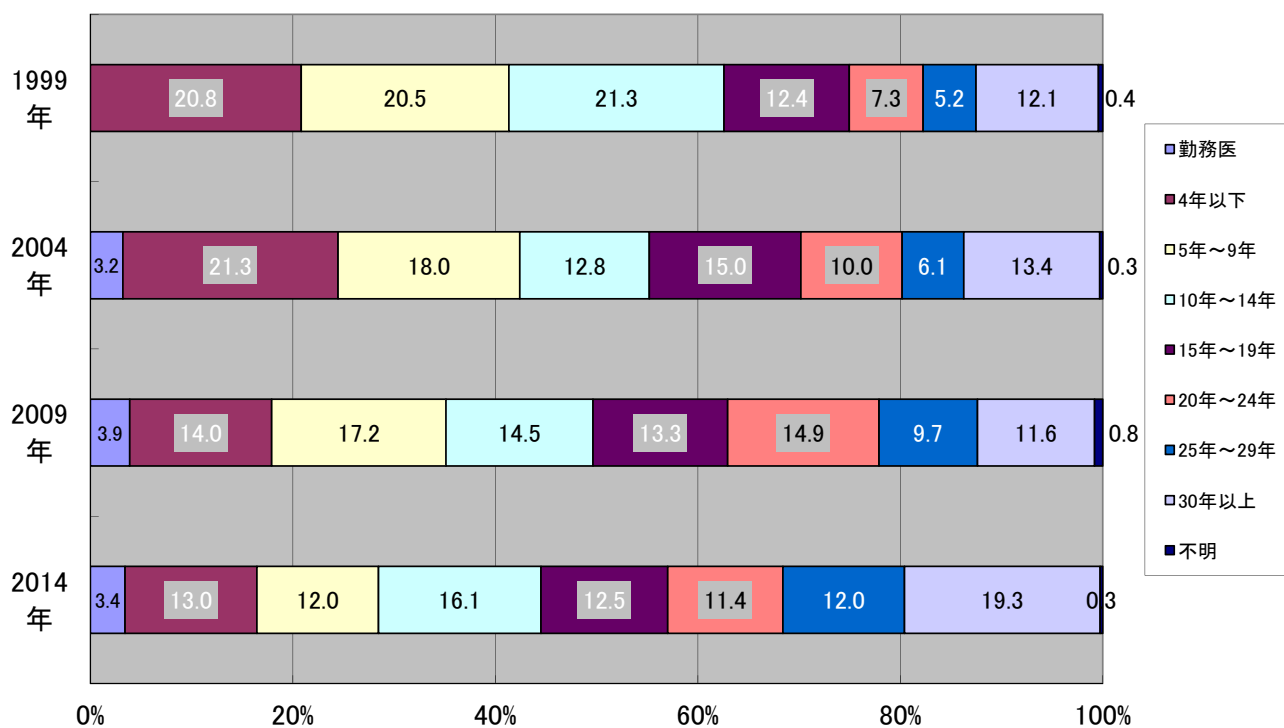
問1 先生の性別は



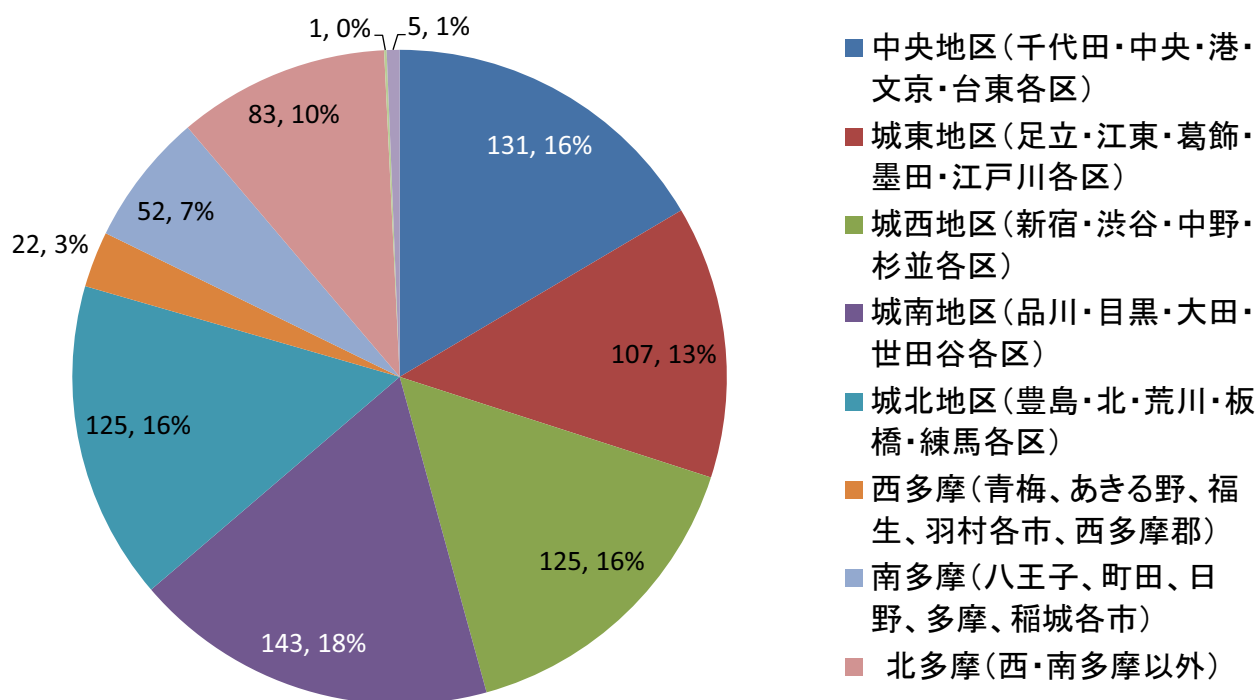
問2 先生の年齢は



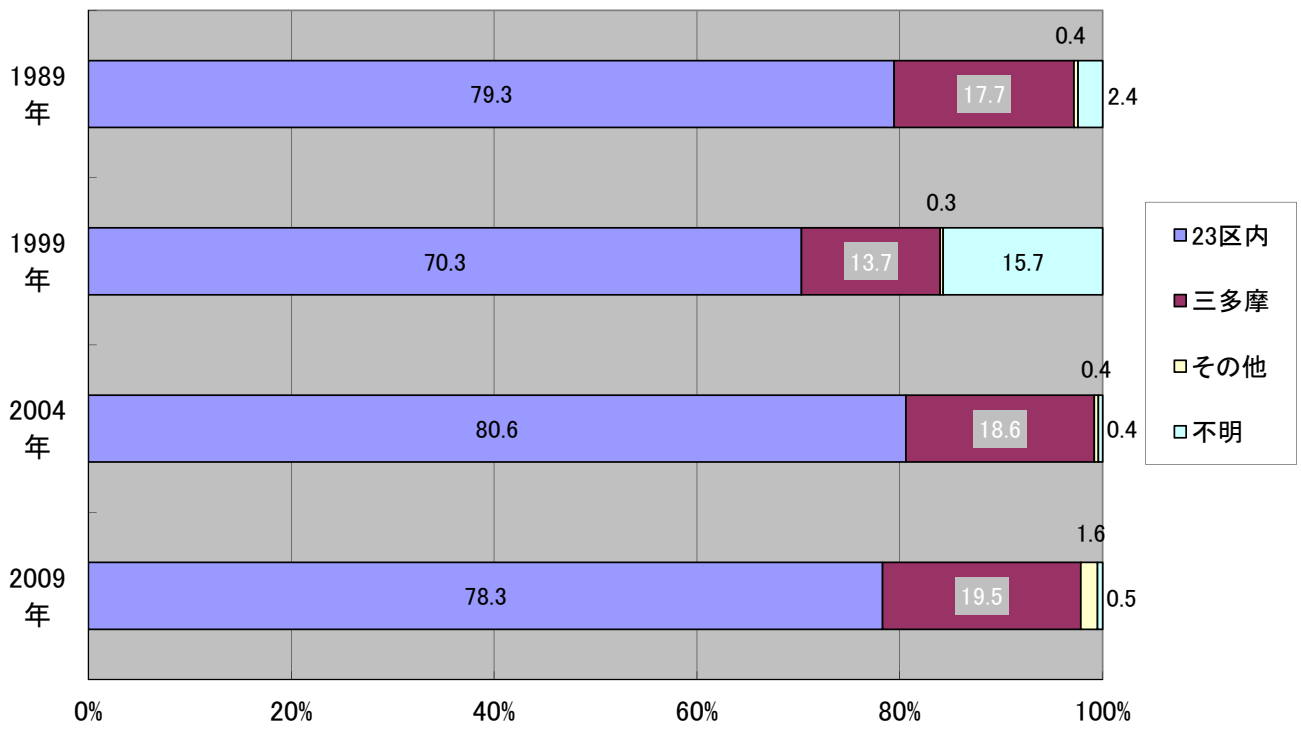
問3 開業歴(09,04,99年)



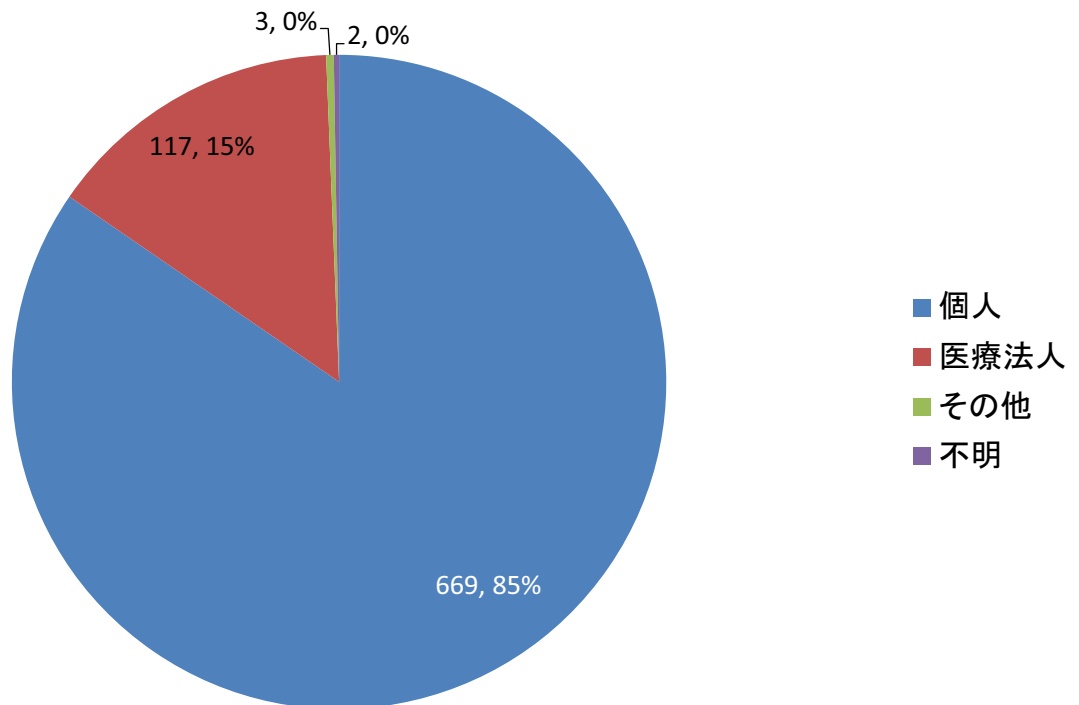
問4 主な開業・勤務地



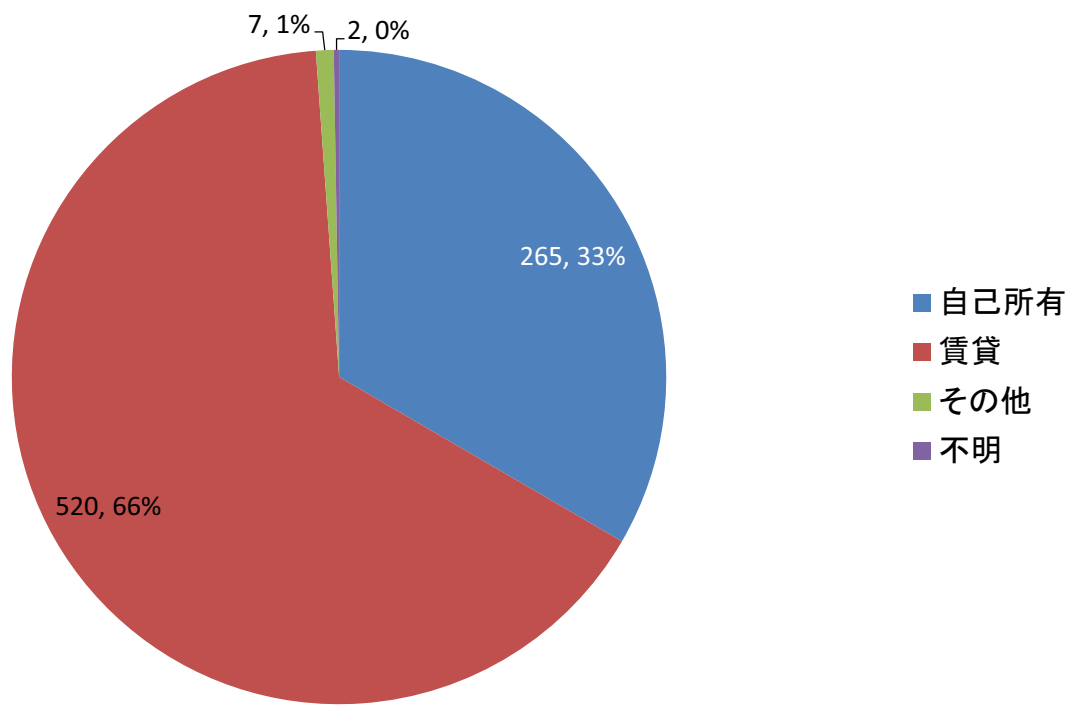
問4 開業・勤務地



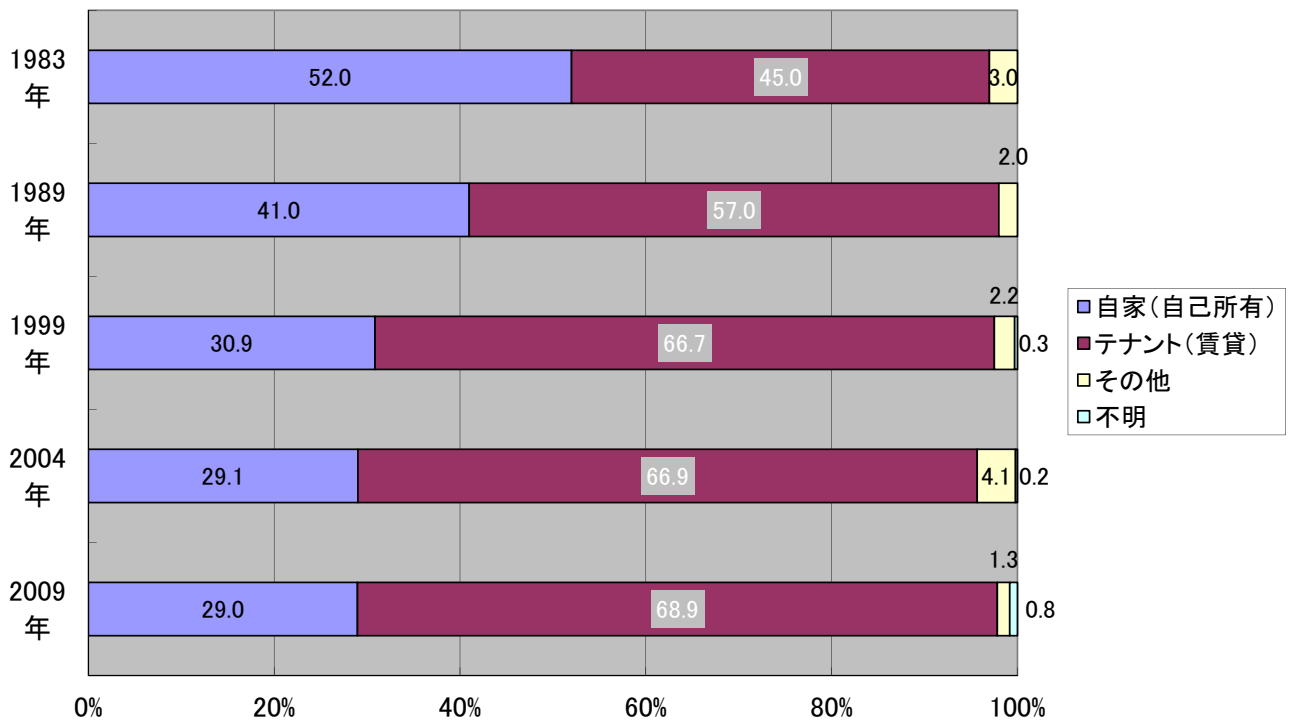
問5① 開設者による区分



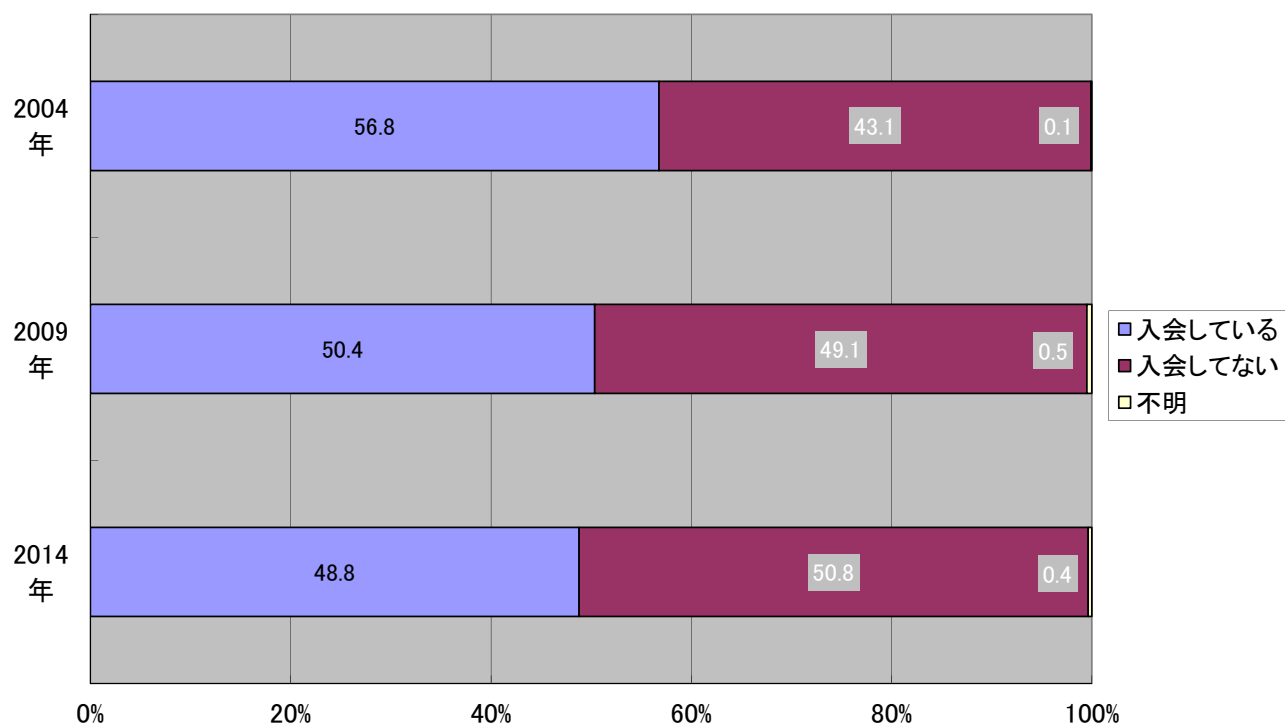
問5② 所有形態



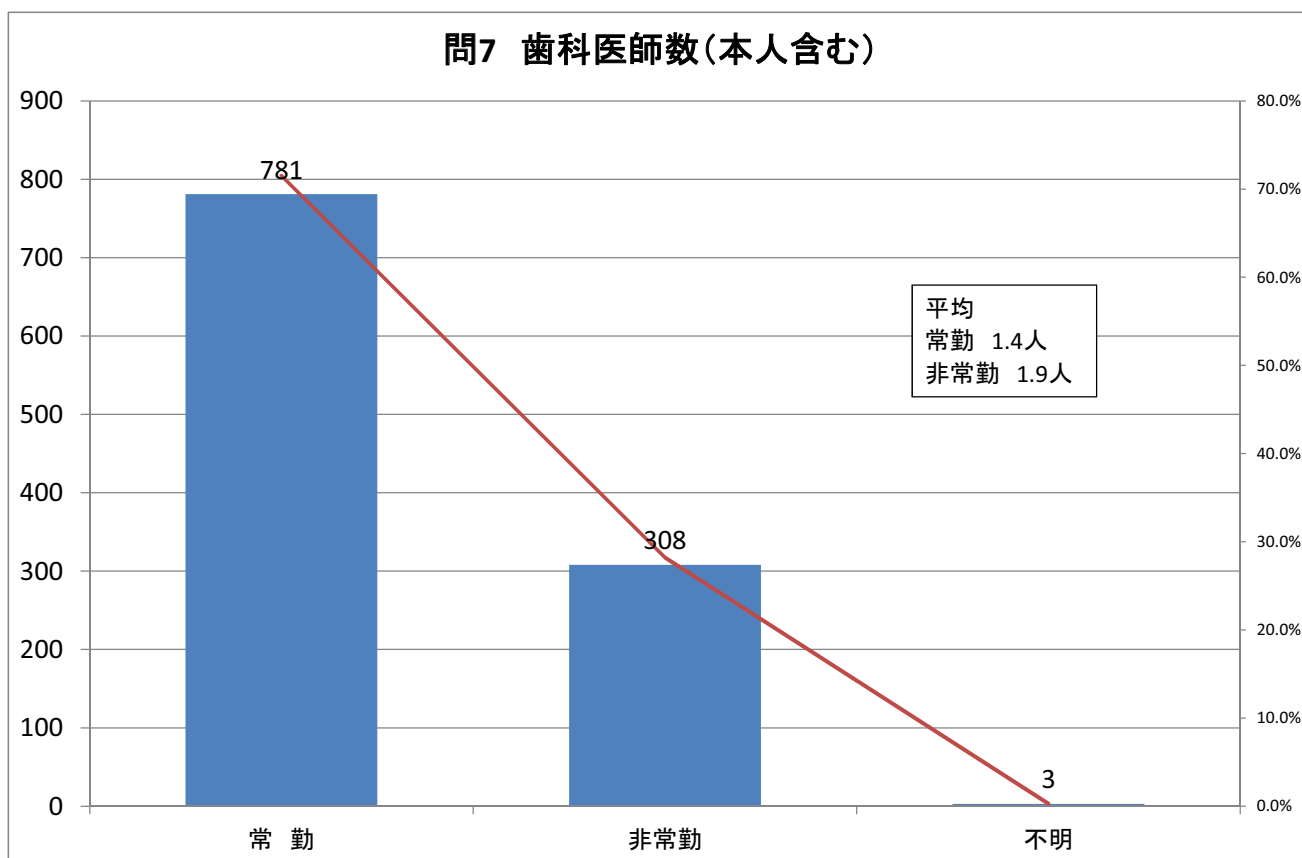
問5② 医療施設の形態



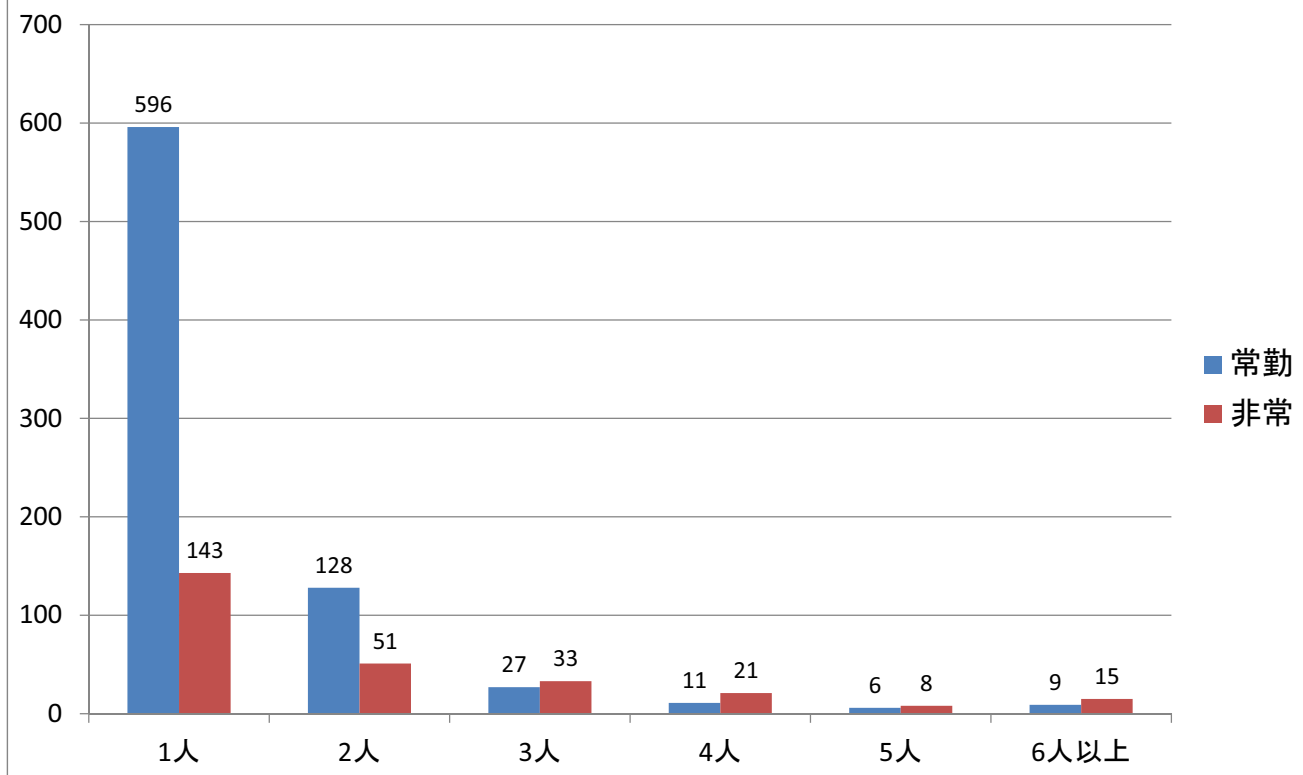
問6 歯科医師会入会の有無



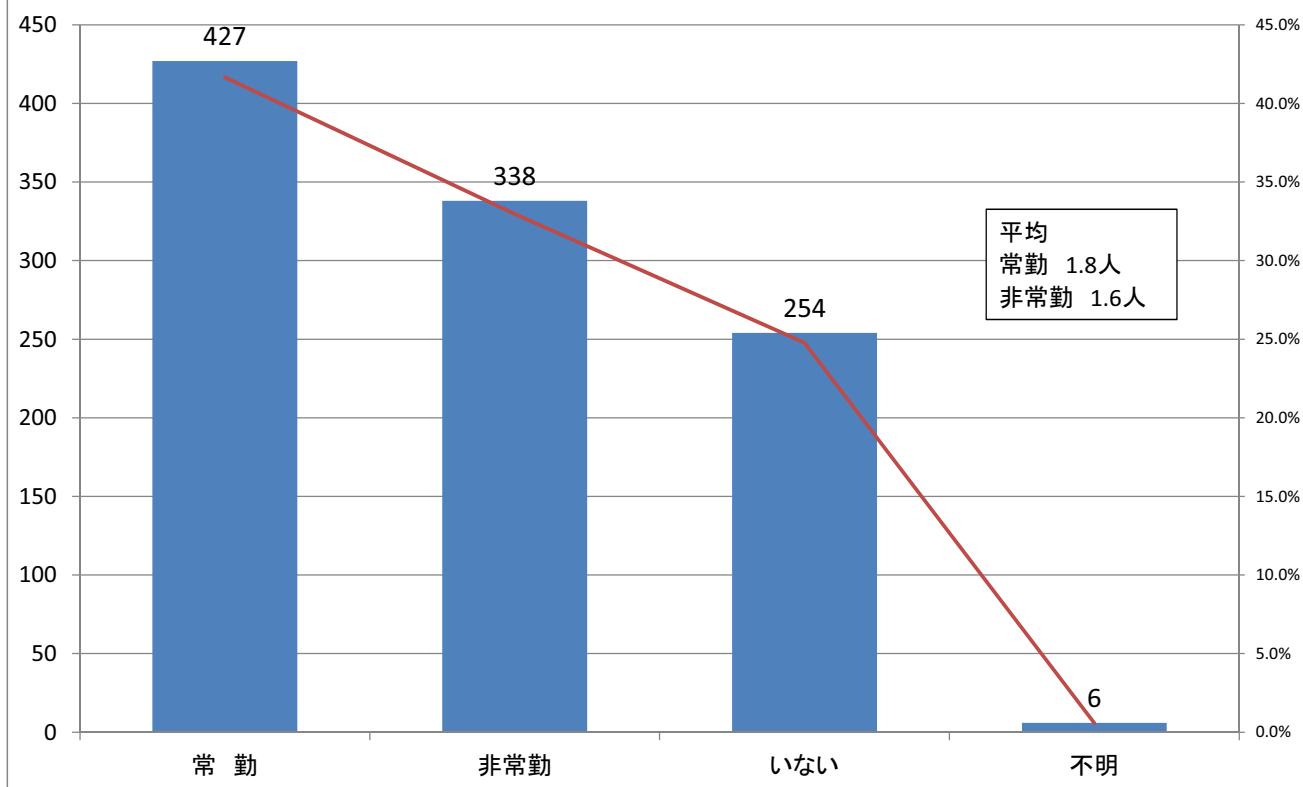
問7 歯科医師数(本人含む)



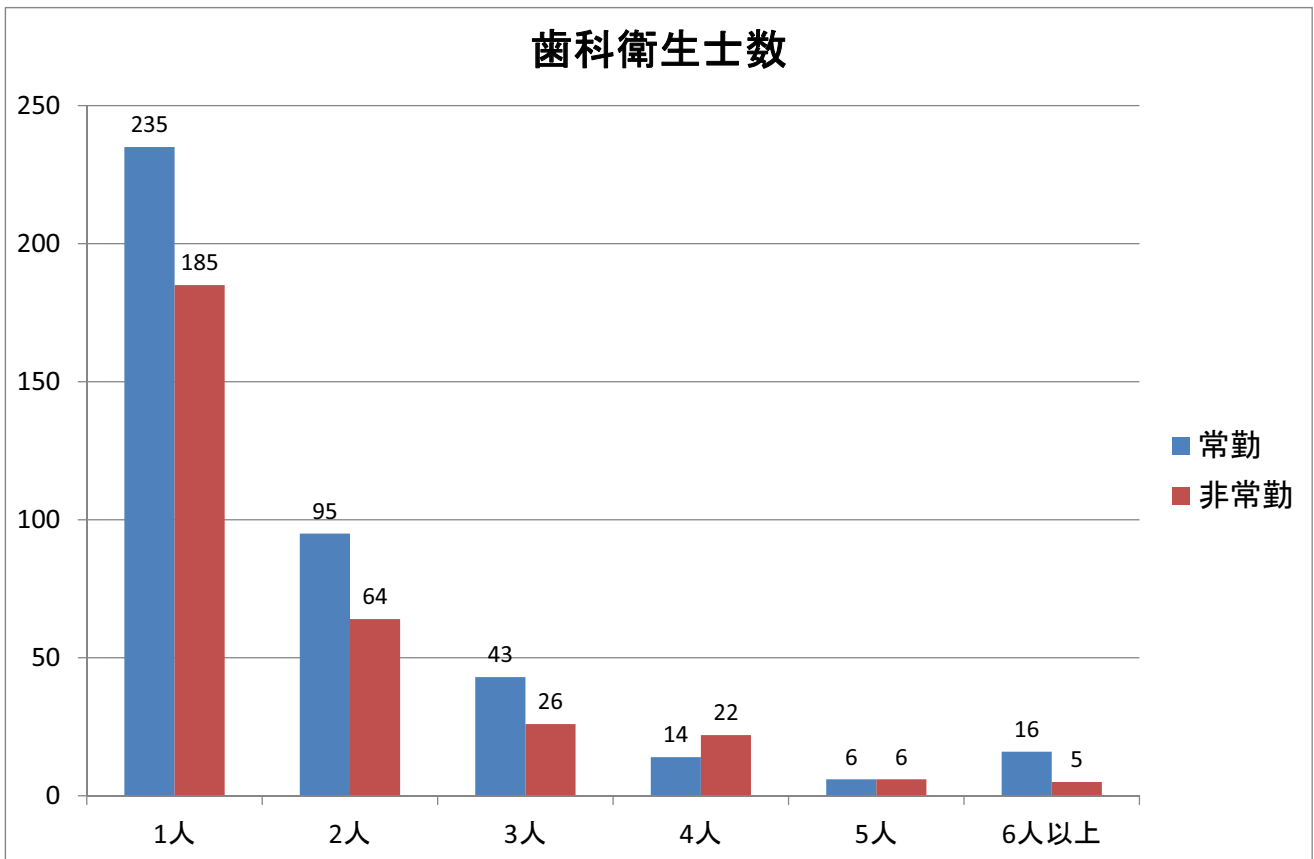
歯科医師数(本人含む)



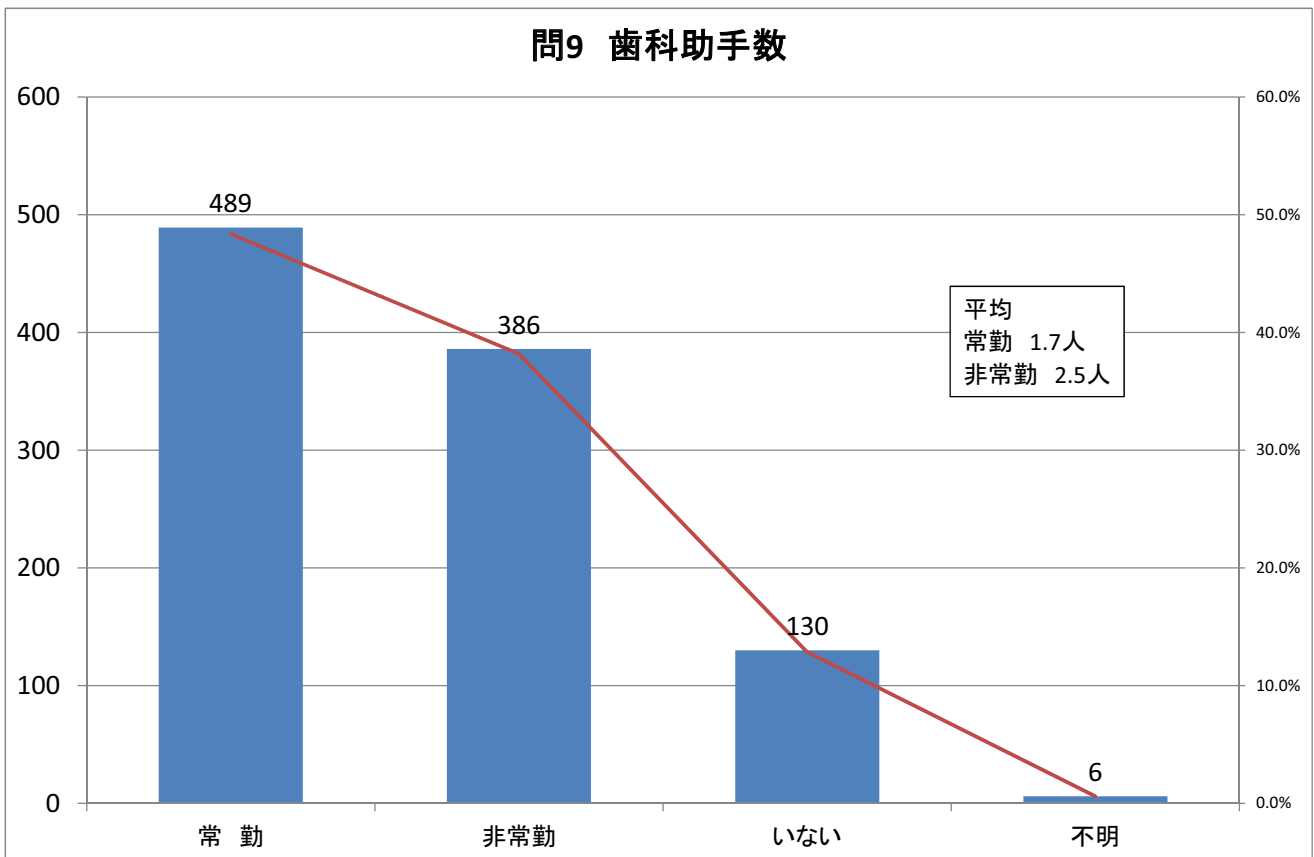
問8 歯科衛生士数



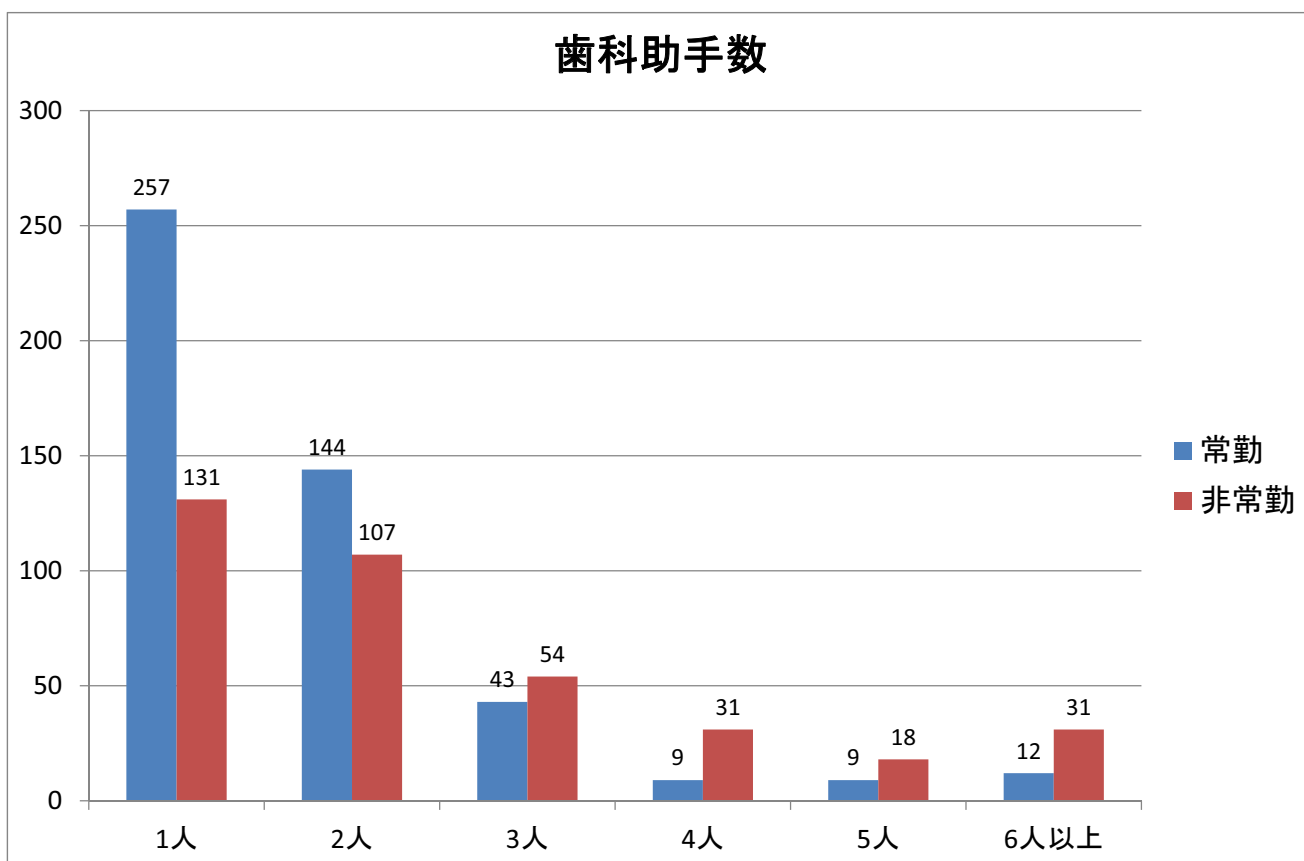
歯科衛生士数



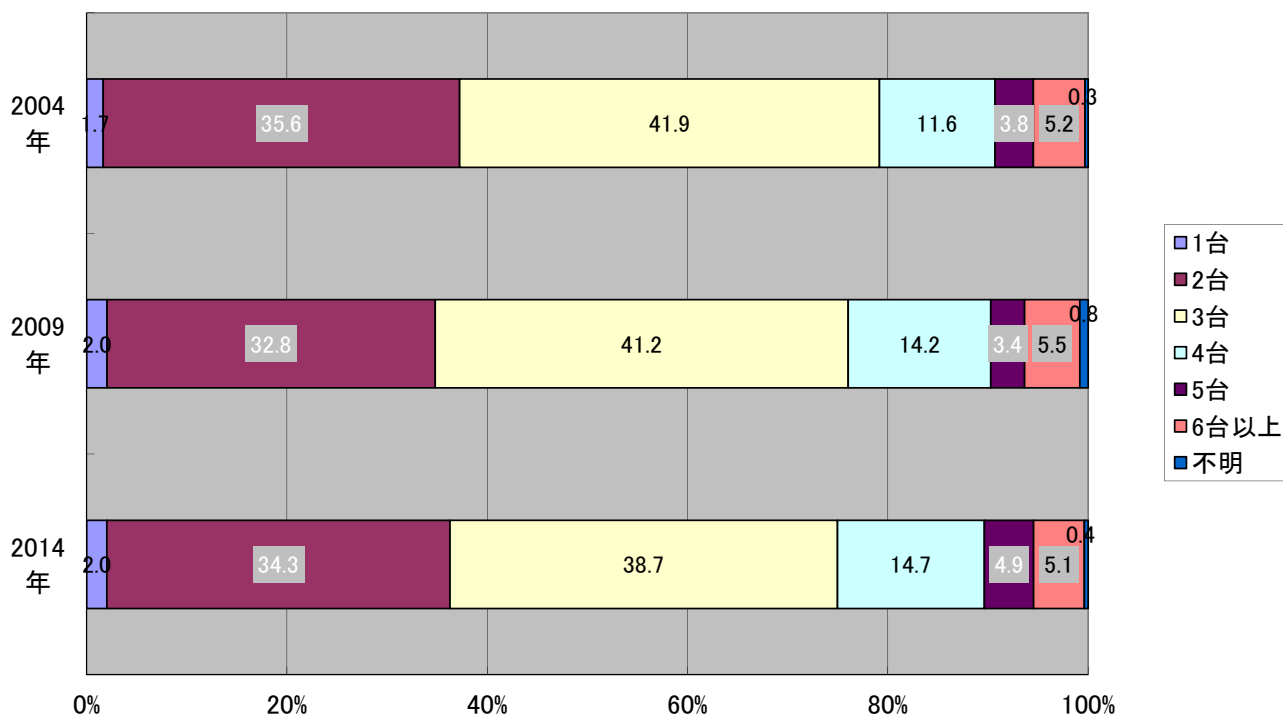
問9 歯科助手数



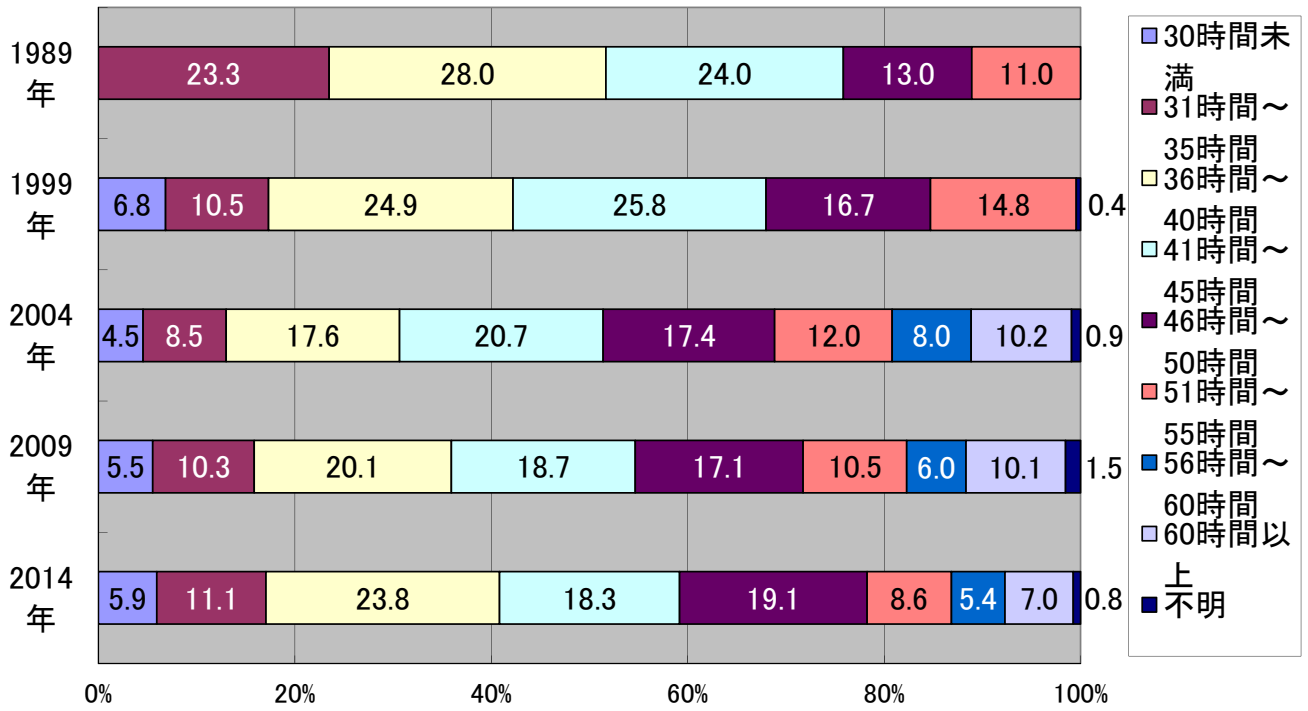
歯科助手数



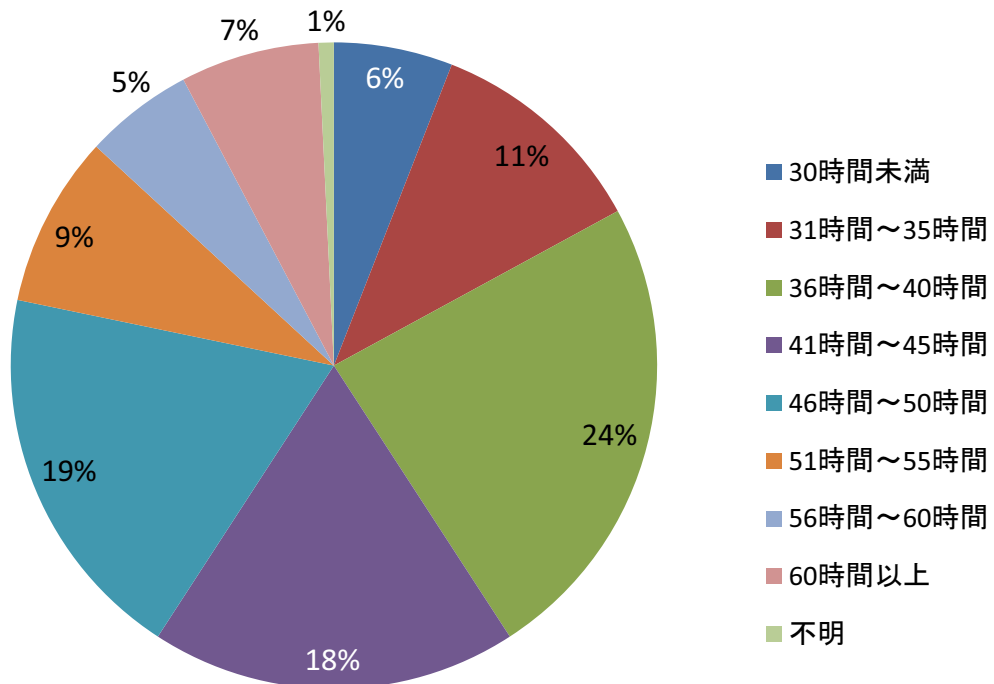
問10 ユニット台数



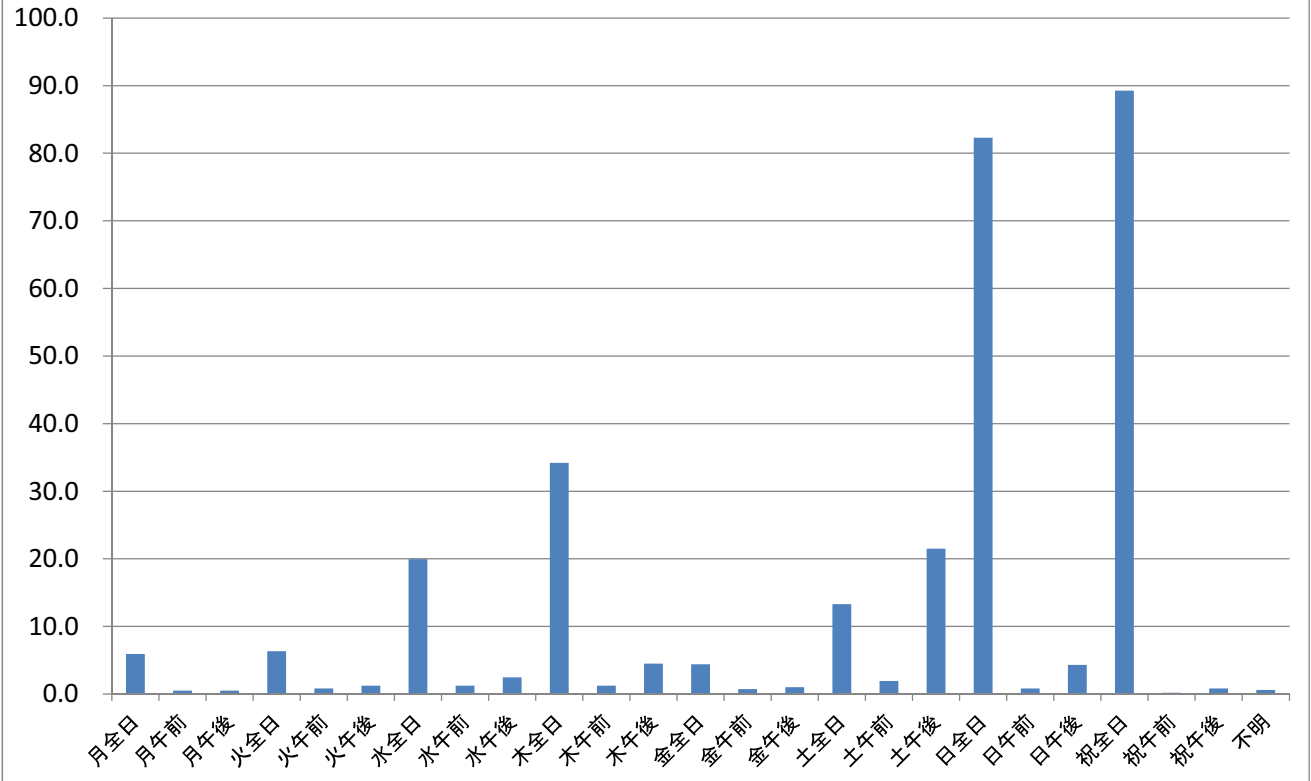
問11 1週間の実労働時間(保険請求事務等業務含む)



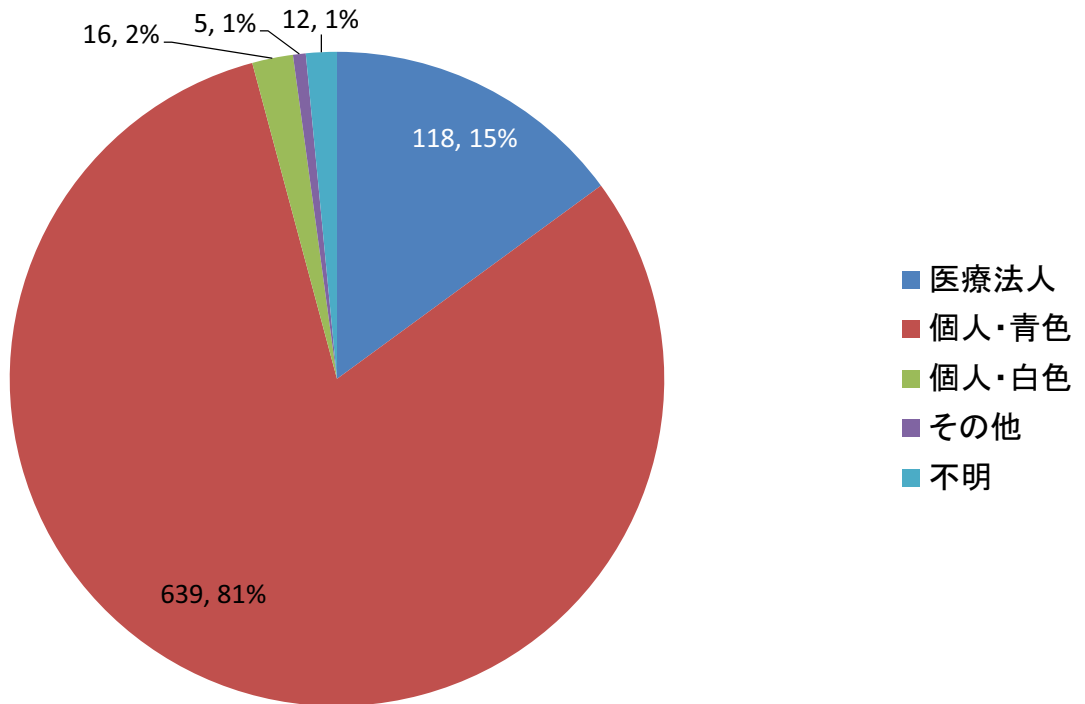
1週間の実労働時間(保険請求事務などの業務を含む)



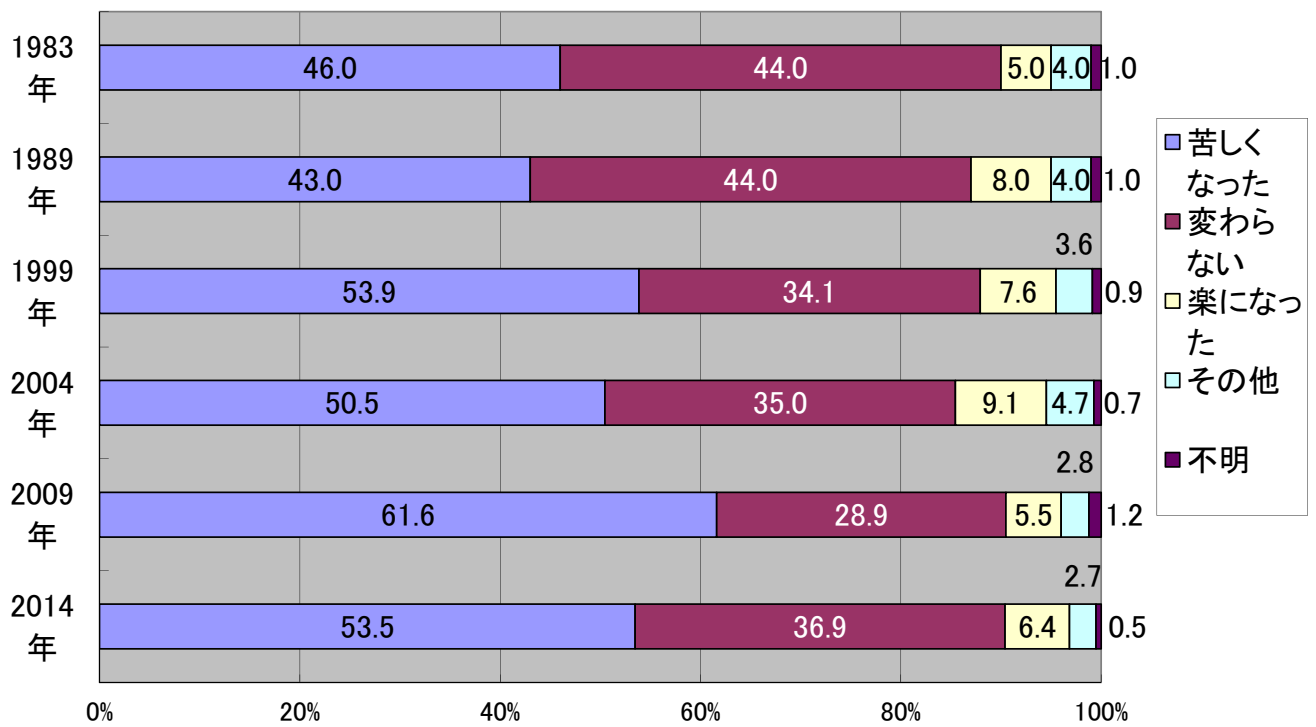
問12 診療所の休診日



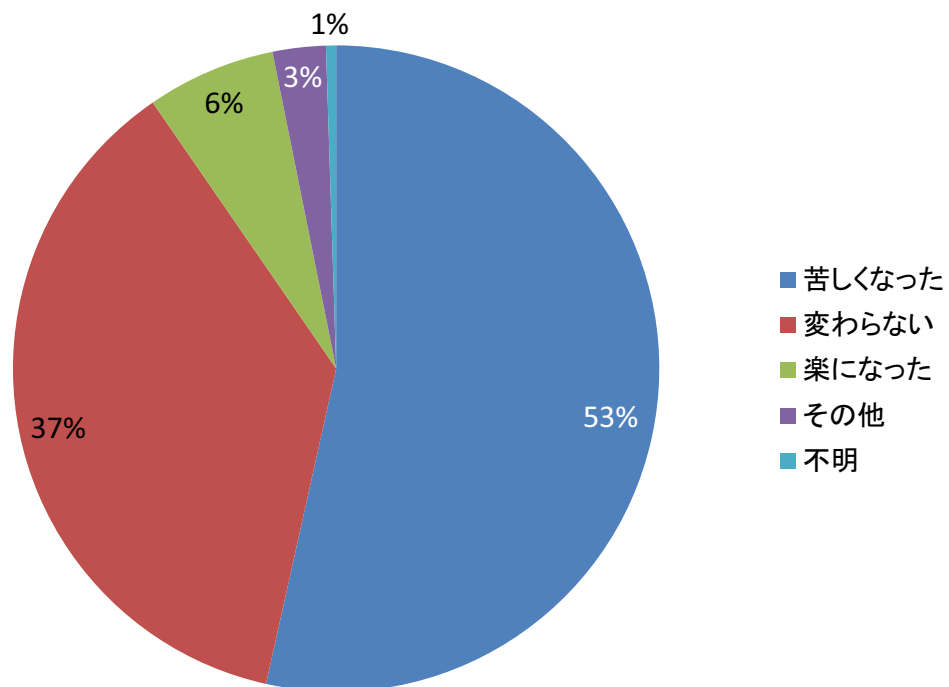
問13 医療施設の申告形態



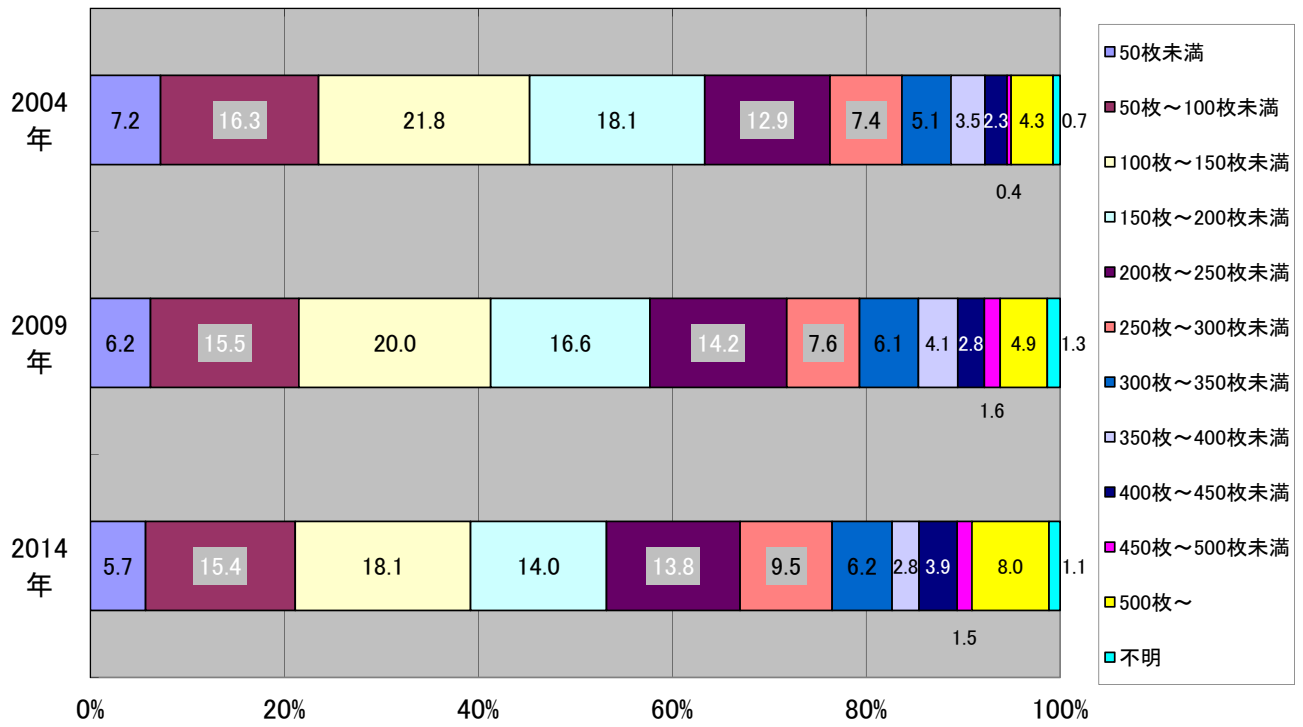
問14 以前と比べた医業経営の状態



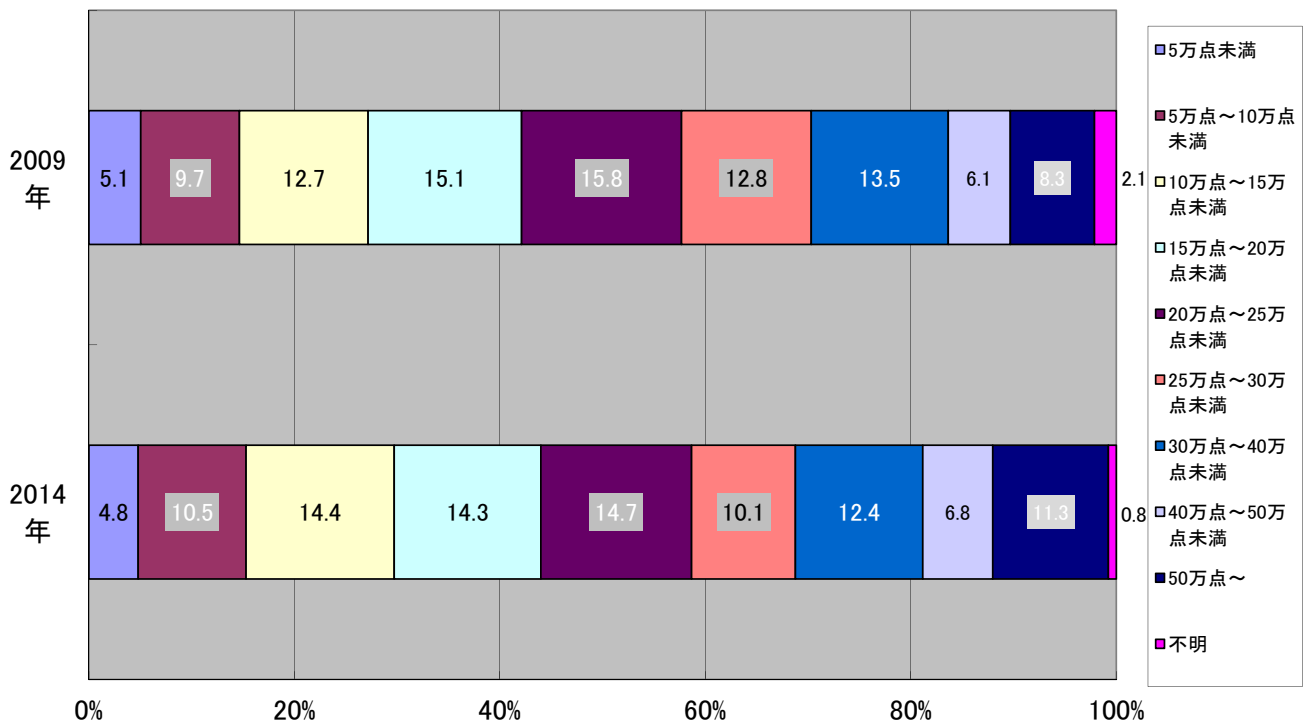
以前と比べた医業経営の状態



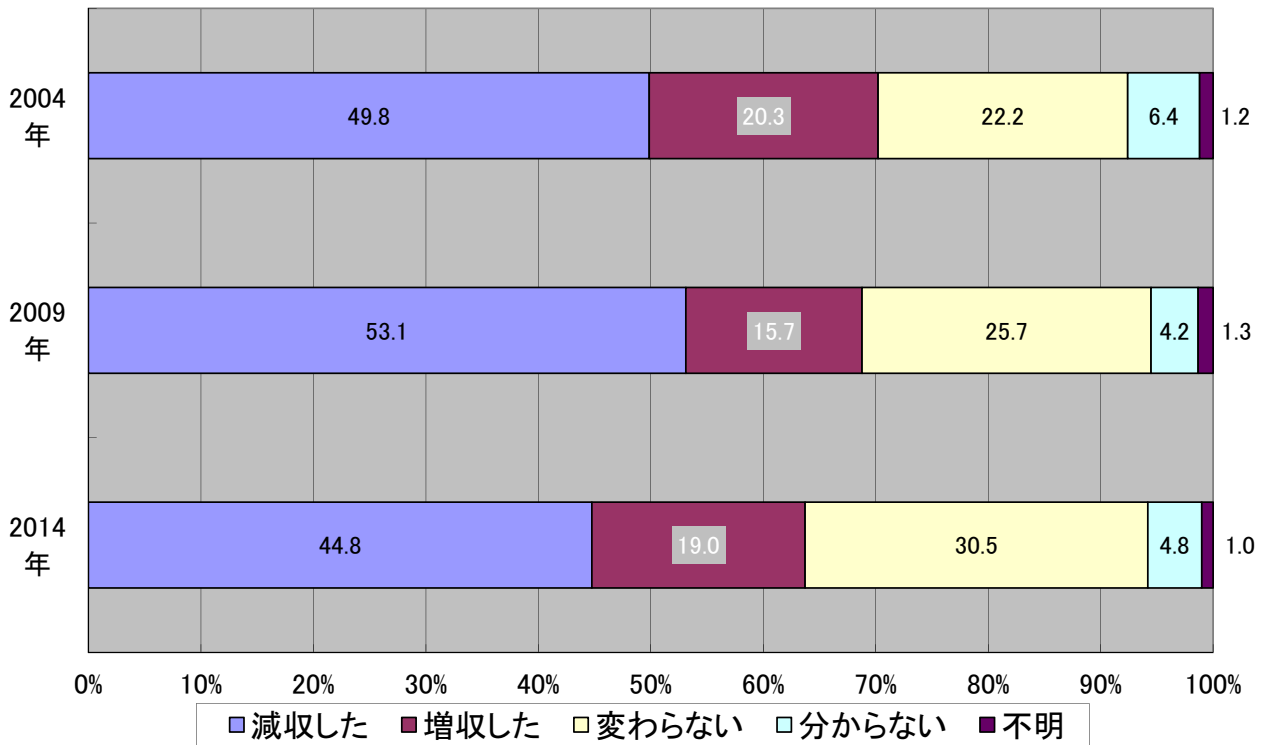
問15① 1ヶ月のレセプト枚数



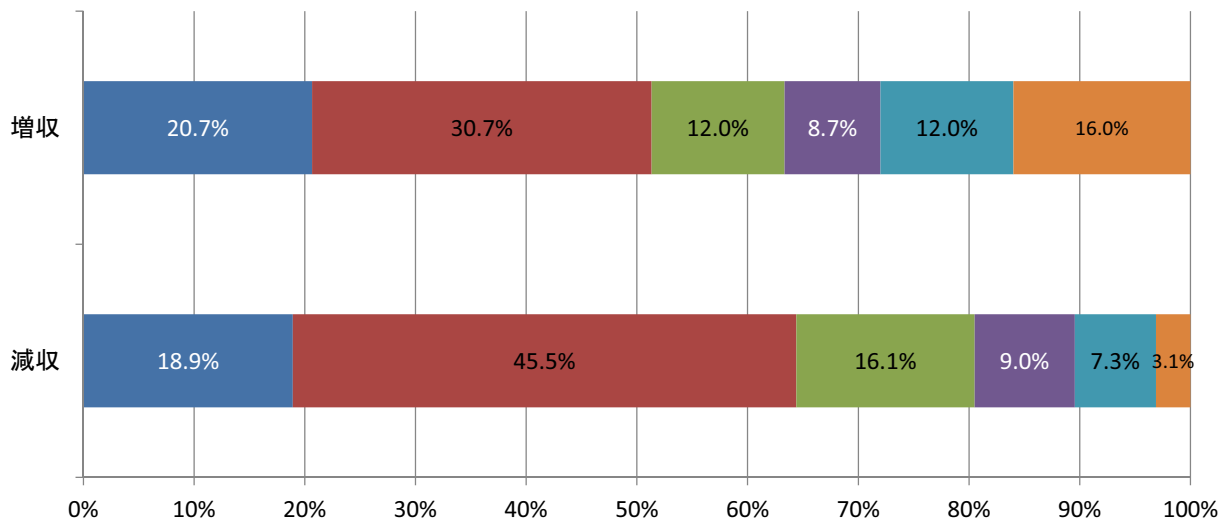
問15② 1ヶ月の総点数



問15③ 昨年と比べた今年6月の収入

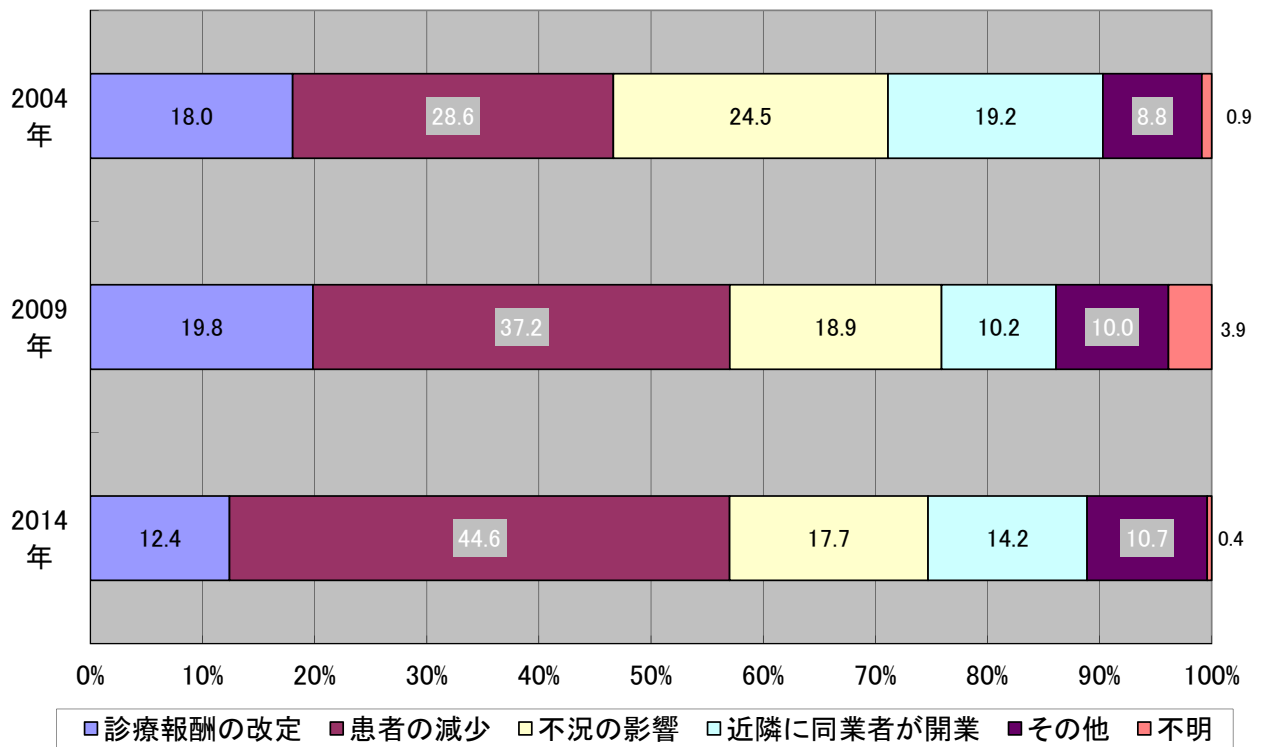


問15 【「増収」「減収」とお答えの先生】その程度は

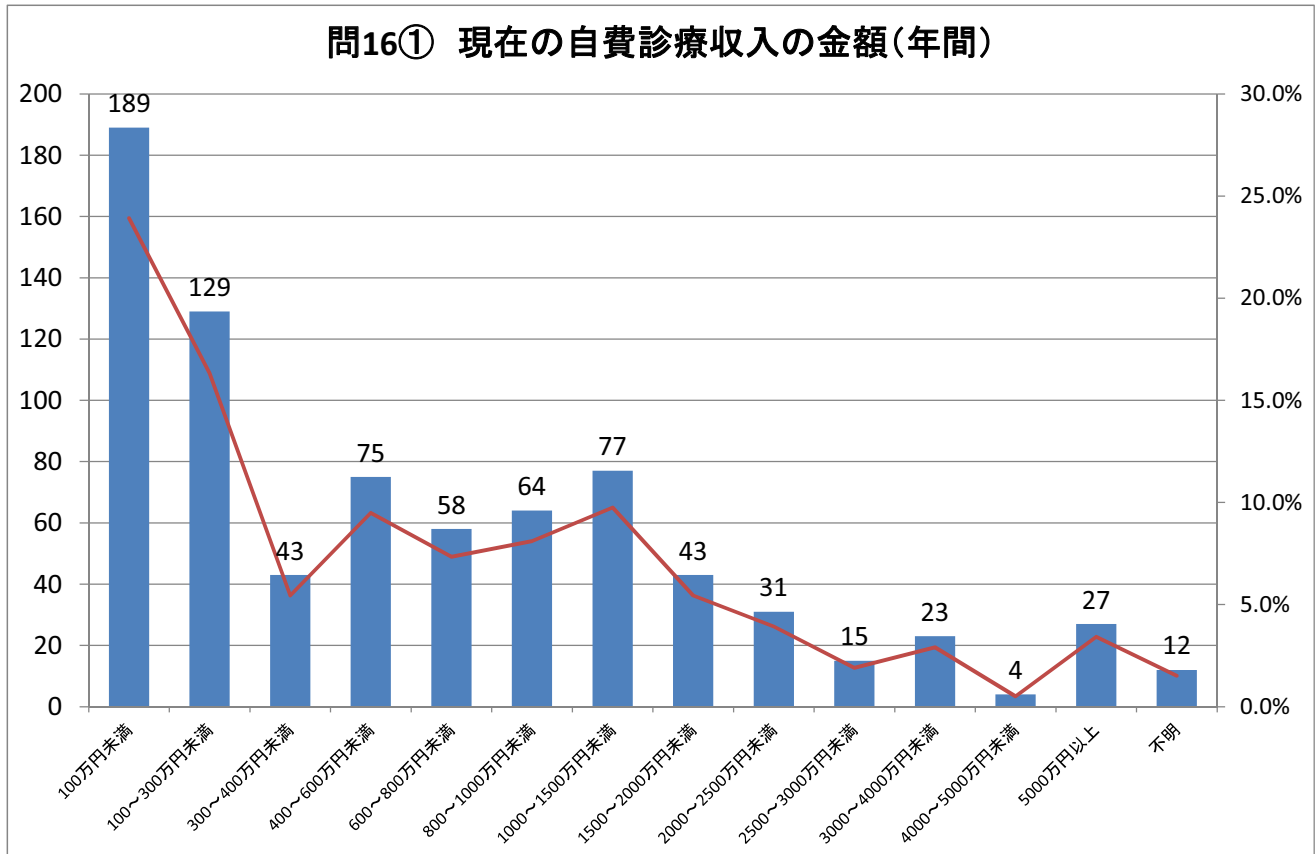


| | 減収 | 増収 |
|------------|-------|-------|
| ■ 5%未満 | 18.9% | 20.7% |
| ■ 5~10%未満 | 45.5% | 30.7% |
| ■ 10~15%未満 | 16.1% | 12.0% |
| ■ 15~20%未満 | 9.0% | 8.7% |
| ■ 20%以上 | 7.3% | 12.0% |
| ■ 不明 | 3.1% | 16.0% |
| ■ 非該当 | 0.0% | 0.0% |

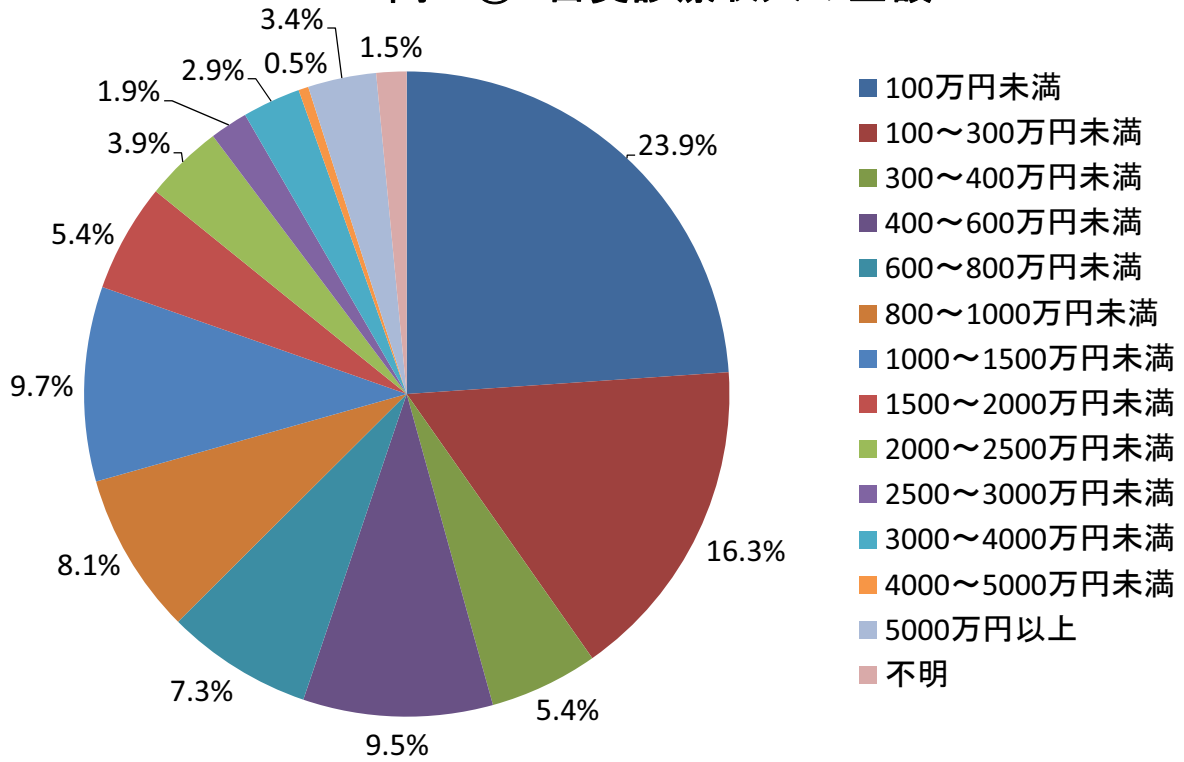
問15③-2 【「減収」とお答えの先生】その主な原因



問16① 現在の自費診療収入の金額(年間)



問16① 自費診療収入の金額



自費診療収入の金額(比較)

